

# MACKLOW SMITH COMPRESSION LOAD CELL

## Series CN

### Applications

Heavy duty weighing, rolling mills, industrial platform, calibration of test machines, load measurement for geophysical work such as plate bearing tests, measuring the load applied in presses.

### Design Features

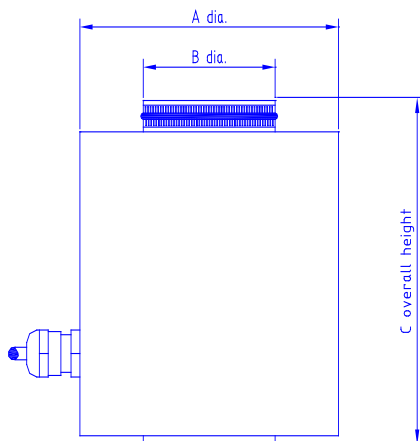
The standard design incorporates an integrated self-aligning platen to ensure accurate measurement of miss-aligned loads.

### Calibration

These load cells can be supplied with a Macklow-Smith works calibration certificate traceable to national standards or a UKAS calibration certificate. They can also be supplied tested and ready for calibration by the customers preferred test laboratory.

### Options

Carry handles (as shown in photo)  
Rubber gaiter between load cell and platen



## SPECIFICATION



Capacity	A	B	C
0 - 1000kN	102mm	52mm	110mm
0 - 2000kN	120mm	85mm	153mm
0 - 4000kN	152mm	120mm	214mm
0 - 6000kN	184mm	147mm	250mm
0 - 8000kN	216mm	170mm	293mm
0 - 10MN	254mm	210mm	450mm
0 - 12MN	254mm	210mm	450mm
0 - 15MN	254mm	210mm	450mm
<b>Rated output</b>	2.0mV/V nominal		
<b>Linearity</b>	± 0.25% of rated output		
<b>Non repeatability</b>	± 0.25% of rated output		
<b>Zero Return (30min)</b>	± 0.05% of applied load		
<b>Zero balance</b>	± 1% of rated output		
<b>Operating temperature</b>	-30°C - +80°C		
<b>Compensated temp'</b>	-10°C - +70°C		
<b>Temp' effect on output</b>	± 0.1% of applied load/°C		
<b>Temp' effect on zero</b>	± 0.02% of rated output/°C		
<b>Safe overload</b>	150% of rated capacity		
<b>Ultimate overload</b>	300% or rated capacity		
<b>Excitation</b>	5V -15 V, AC or DC		
<b>Input impedance</b>	760 Ω nominal		
<b>Output impedance</b>	700 Ω nominal		
<b>Insulation resistance</b>	>2 GΩ at 50 V DC		
<b>Construction</b>	Plated alloy steel		
<b>Environmental</b>	IP65		
<b>Cable (standard)</b>	4 core screened		

In the interest of product development we reserve the right to alter specifications without prior notice.